



The Global PCB Experts

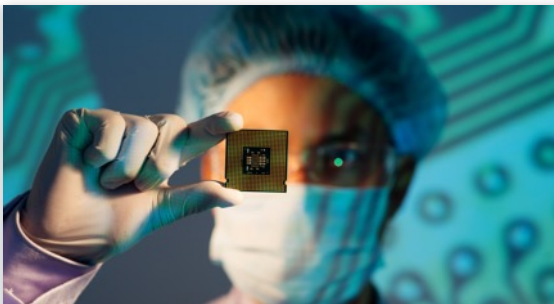
## Company overview September 2022

# Fineline – the only PCB partner you will need

**FINELINE**



**Trusted partnerships** with customers and manufacturers



**Expert solutions** at every point of the PCB supply chain



**Experience and expertise** give flexibility and peace of mind

Fineline supplies PCB technology and supply chain solutions to customers around the world. Our team of experts will ensure you get the technology you need, combined with great service, at every point of the supply chain.

# Fineline – Facts and Figures

**FINELINE**



**13**

Global offices



**50**

Countries supplied



**320**

Global experts



**100,000**

Different part numbers  
manufactured annually



**3000**

Global customers



**130 million**

Circuits supplied annually



**80**

PCB engineers



**25**

Approved and audited  
factories

# Why choose us?



The breadth of our network ensures there is always a Fineline expert close to you.

## Global reach, local support

A partnership with Fineline brings you the commercial advantages of a global supplier, combined with the flexibility of a local contact who understands your market environment and challenges.

### Regional Offices

Benelux  
France  
Israel  
Italy

Germany  
Austria  
UK  
Sweden

Switzerland  
Spain  
China



# Why choose us?

## Our people

We strive for excellence in everything we do.  
We are trusted partners, close to customers  
and easy to do business with.  
Our customers' goals are our goals.

“I know that the Fineline team will always  
go the extra mile for me.”

*Expertise, experience, excellence*

**FINELINE**  
RECURRING IN PCB



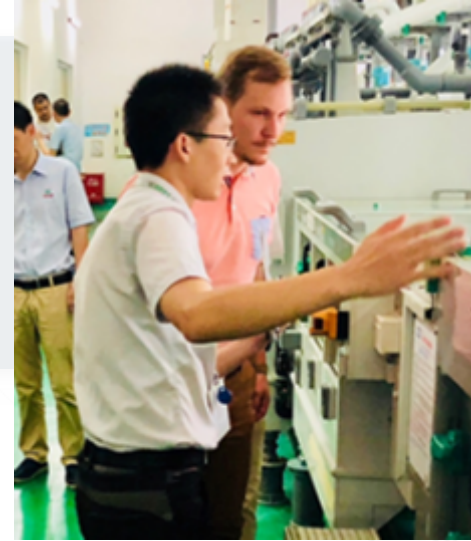
# Why choose us?

## Supply Chain Expertise

We know the PCB world inside out.  
We share our knowledge and experience for our customers' benefit from quotation to order fulfilment.

- Deep understanding of the global PCB market and its drivers
- Global manufacturing network
- Logistics specialists
- Customised inventory programmes

*Supported by robust quality control programme*



# Why choose us?

## Factory Management

We have long-lasting partnerships with approved and audited manufacturing partners. We match customer needs with factory capabilities to deliver PCBs that meet technology needs and lead times.

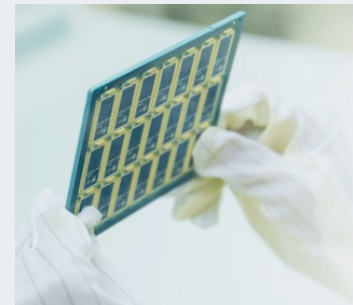
- Robust audit process led by our QA Team and our VDA certified auditor
- Full KPI reporting to maintain performance levels
- Every order monitored throughout the production cycle



# Why choose us?

## Quality Assurance

Quality starts with the first customer conversation. We understand your business and requirements and we apply our quality control across all our processes from order to delivery – and onwards.



- Fineline QC and Process engineers on-site at strategic partners
- Global QA team report on:
  - Product quality
  - Customer satisfaction
  - Monitoring supplier quality performance
  - Corrective action management
- Accreditations across key market sectors

Operating with integrity and transparency, we create and implement plans to ensure continuous improvement across all of our processes and customer interactions.



# Why choose us?

## Logistics that delivery

Whether spot buys or full vendor managed inventory, we'll provide a flexible, cost effective solution to meet your needs.



- VMI programme tailored to customer needs
  - Safety stock management
  - Consignment stock options
  - Forecasting advice and management
- Global warehouse network
- Consolidated and express freight options
  - Air, sea, rail

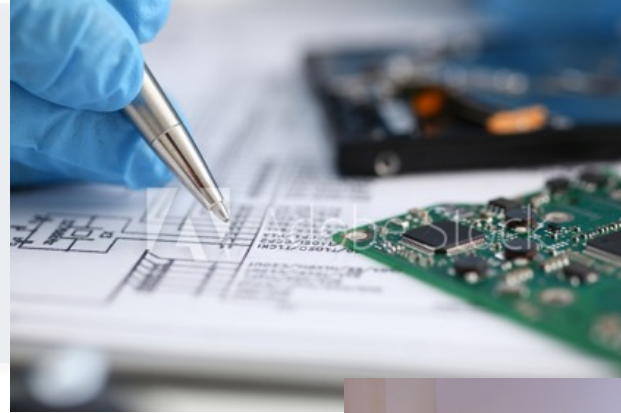


# Why choose us?

## Advanced IT Solutions

Our intelligent business systems support our business – and yours. We accurately match customer needs and preferences with partners' capabilities to deliver the most efficient and effective solution.

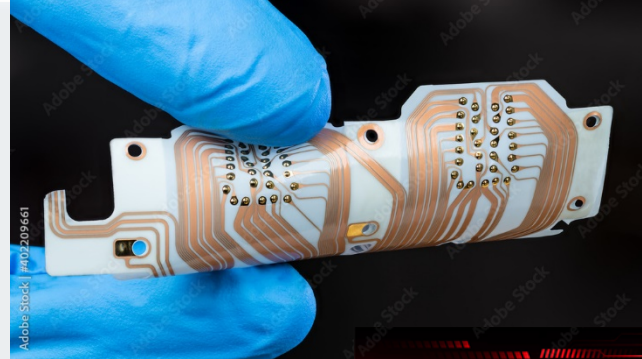
- Customer centric IT systems deliver:
  - Quick response quotation management
  - Reporting tailored to customer need
  - Visibility – informed buying decisions
  - Customer specific checklist to ensure “right first time” approach.



# Why choose us?

## Technology approach

Whatever your specification or market sector, we balance your technology and business needs to deliver the result you need.



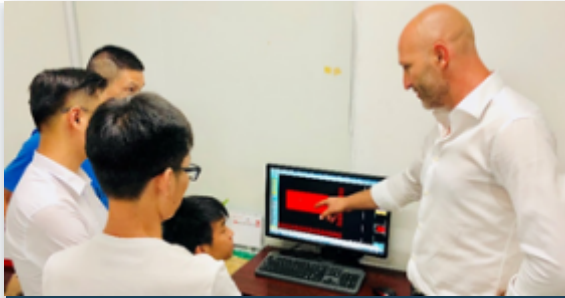
- Technical advice across materials selection
- Design for manufacture and reliability expertise
- Programme of technical seminars



*Supporting and simplifying your technology challenges*

# Fineline – the only PCB partner you will need

FINELINE



Expertise



Experience



Excellence

Working with Fineline brings you a partnership you can rely on. We'll manage your supply chain and deliver your projects, providing technology and commercial advantages at every point.

*What can we do for you?*





**FINELINE**

The Global PCB Experts

We're here for you|