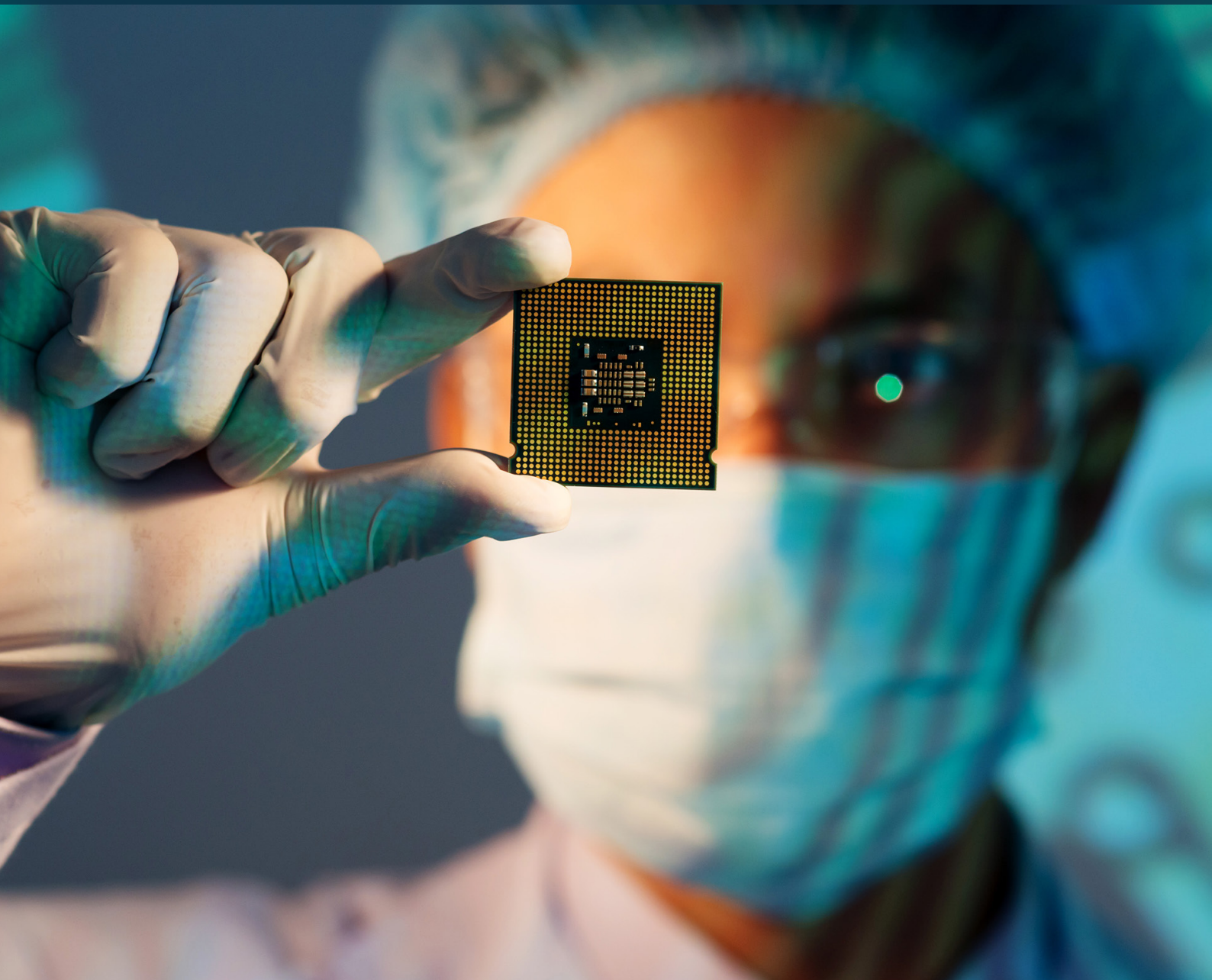


**FINELINE**

---

DELIVERING GLOBAL  
PCB SOLUTIONS

# Our materials



**Standard (Rigid materials)**

Material Name	Material Type	Tg	Dk(1GHZ)	Df(1GHZ)	IPC sheet (IPC4101)
IT-158	FR4	150	4.3	0.016	99
NY2150	FR4	150	5.4	0.035	98/99/101
S1000H	FR4	150	4.6	0.011	99
S1151G	FR4	150	4.6	0.011	
IT-180A	FR4	175	4.4	0.015	99 / 101 / 126
TU-768	FR4	180	4.3	0.019	21/24/26/28/98/99/101/106
S1000-2/S1000-2M	FR4	180	4.6	0.018	126
NY2170	FR4	175	5.4	0.035	98/99/101/126
185HR	FR4	180	4.04	0.0192	21 / 24 / 26 / 98 / 99 / 101 / 126
S1190	FR4	190	4.6	0.015	126

**RF (Rigid materials)**

Material Name	Material Type	Tg	Dk(1GHZ)	Df(1GHZ)	IPC sheet
RO4730G3	ceramic filler	280	3.0	0.0023	
RO4533	ceramic filler	280	3.3	0.0022	
RO4350B	ceramic filler	280	3.5	0.0037	IPC-4103A/240
RO4350B Lopro	ceramic filler	280	3.5	0.0037	IPC-4103A/240
RO4835	ceramic filler	280	3.5	0.0030	
RO4835 Lopro	ceramic filler	280	3.5	0.0030	
RF-35	ceramic filler	315	3.5	0.0018	
RF-60TC	PTFE	/	6.15	0.0020	
RO3006	PTFE	/	6.15	0.0020	
RT5880	PTFE	/	2.2	0.0009	
TLX-8	PTFE	/	2.55	0.0018	
RO4725JXR	ceramic filler	280	2.55	0.0022	
RO4725JXR lopro	ceramic filler	280	2.55	0.0022	
ZYF265D	PTFE	/	2.65	0.0010	
RT6002	PTFE	/	2.94	0.0012	
RO4003C	ceramic filler	280	3.38	0.0027	IPC-4103A/240
RO4003C Lopro	ceramic filler	280	3.38	0.0027	
RO3003	PTFE	/	3.0	0.0013	
RT6010LM	PTFE	/	10.2	0.0023	
AD1000/AD1000L	PTFE	/	10.2	0.0023	

**High speed (Rigid materials)**

Material Name	Material Type	Tg	Dk(1GHZ)	Df(1GHZ)	IPC sheet (IPC4101)
IT-170GRA1	FR4	170	3.9	0.008	
TU-862HF	FR4	180	4.4	0.01	127, /128, /130
FR408 HR	FR4	200	3.69	0.0091	21/24/98/99/101/126
TU-872 SLK	FR4	190	3.8	0.006	29, /99, /101, /126
R-5725S/ M4S	FR4	200	3.8	0.007	
TU-872 SLK SP	FR4	190	3.4	0.004	29, /99, /101, /126
IT-968	FR4	185	3.78	0.0034	
R-5775G/ M6G	FR4	185	3.71	0.0021	
R-5775N/ M6N	FR4	185	3.71	0.0021	
R-5785/M7	FR4	200	3.4	0.002	
ITERA-MT-40					
R-5785N/ M7N	FR4	200	3.4	0.002	

**Standard (flex materials)**

Material Name	Material Type	Tg	Dk(1GHZ)	Df(1GHZ)	IPC sheet
SF305	Polyamide	/	3.31	0.0188	IPC-4204/2
DuPont AP	Polyamide	/	3.4	0.02	IPC 4204/11
RF-775	Polyamide	/	3.2	0.0016	
RF-777	Polyamide	/	3.4	0.0016	
Thinflex W	Polyamide	/	3.3	0.01	

**Other special materials**

Material Name	Material Type	Tg	Dk(1GHZ)	Df(1GHZ)	IPC sheet (IPC4101)
TU933(T3)	FR4	170	3.4	0.0025	102
IT150DA	FR4	180	3.64	0.0065	
N4000-13/EP/SI	FR4	210(DSC)	3.1	0.0084	29
N4800-20/SI	FR4	200	3.29	0.0061	73
S1150G	FR4	155	4.5	0.009	128
VT901	Polyamide	250	4.05	0.012	
85N	Polyamide	250	4.2	0.01	41
RO4000LoPro	ceramic filler	280	3.5	0.0027	IPC-4103A/240
RO4450F PP	Bondply	280	3.52	0.04	
TMM® 10 Laminates	ceramic filler	/	9.8	0.0022	
2929 Bondply	Bondply	170	2.94	0.003	
AD1000™	PTFE	/	10.2	0.0023	
F4BM-1/2	PTFE	/	2.2–3.0	/	
ZYF300CA	PTFE	/	3	0.0019	
GF265	PTFE	/	2.65	0.0017	
LNB33	ceramic filler	280	3.3	0.0025	



## Our Global Offices

### AUSTRIA

#### Fineline Austria

##### Fuchsberger PCB & Electronics GmbH

Floridsdorfer Hauptstrasse 1

1210 Wien

Austria

—  
info-austria@fineline-global.com

0043 (0)1 2708565

### BENELUX

#### Fineline QPI BV

Panovenweg 12

5708 HR Helmond,

Netherlands

—  
info-qpi@fineline-global.com

+31 492 590 059

### CHINA

#### Fineline China

Room 2002, Unit 1,

Dongguan Taiwan

Business Mansion (TBA Tower),

No. 11, Dongguan Avenue,

Dongcheng District, Dongguan,

Guangdong, China

—  
info-china@fineline-global.com

+86 (0) 769 26989726

### FRANCE

#### Fineline France S.A.S.

ZAC la croix zone Cosmo

125 rue Pierre Mendès France

34150 Gignac- France

—  
info-france@fineline-global.com

+33 (0) 467963969

### GERMANY

#### Fine Line Gesellschaft für

##### Leiterplattentechnik mbH

##### KBL Circuits GmbH & Co KG

Itterpark 4

40724 Hilden

—  
info-germany@fineline-global.com

+49 (0) 2103 908540

### ISRAEL

Aviv PCB and Technologies Ltd.

Doar Na Ha'amakim

Kibutz Hazorea, 3658100

—  
info-aviv@fineline-global.com

+972 (0) 49937502

### ITALY

Fineline Italy Srl

via F.lli Kennedy 22/c

24060 Bagnatica (Bg)

—  
info-italy@fineline-global.com

+39 035 670282

P.IVA 07595130969

### SCANDINAVIA, FINLAND

### BALTIC STATES

#### Fineline Nordic AB

Datavägen 5

SE-17543 Järfälla, Sweden

—  
nordic@fineline-global.com

+46 (0)8 590 99390

+46 705291159

### SPAIN

#### Fineline Spain , S.L.U.

C/ Lamisingo Iturria 1, Of. 203-204

20305 – Irun (Gipuzkoa)

—  
info-spain@fineline-global.com

+34 943 571426

### SWITZERLAND

Fineline Switzerland AG

35 Winkelried Strasse

CH-6003 Luzern

—  
info-switzerland@fineline-global.com

+41 41 5445033

### UNITED KINGDOM

Fineline VAR Ltd

Gardner House, Hornbeam Park Avenue,

Harrogate, North Yorkshire HG2 8NA

—  
info-uk@fineline-global.com

+44 (0) 1249 815815